



*Total Solution Provider in Saw Device*

---

# SA06219BD

62.5MHz IF SAW Filter

19.5Hz Bandwidth

Revision 0: 30. January. 2008



- Electrical Characteristics
  - Package Dimensions
  - Testing Environment
  - Frequency Characteristics
- 

**SAWNICS Inc.**

---

460 Cheonheung-ri, Seonggeo-eup, Cheonan-si, Chungcheongnam-do, 330-836 / Korea.  
Tel: +82 41 550 9372 / Fax: +82 41 550 9399 / [www.sawnics.com](http://www.sawnics.com)

## □ Electrical Characteristics

### Maximum Ratings

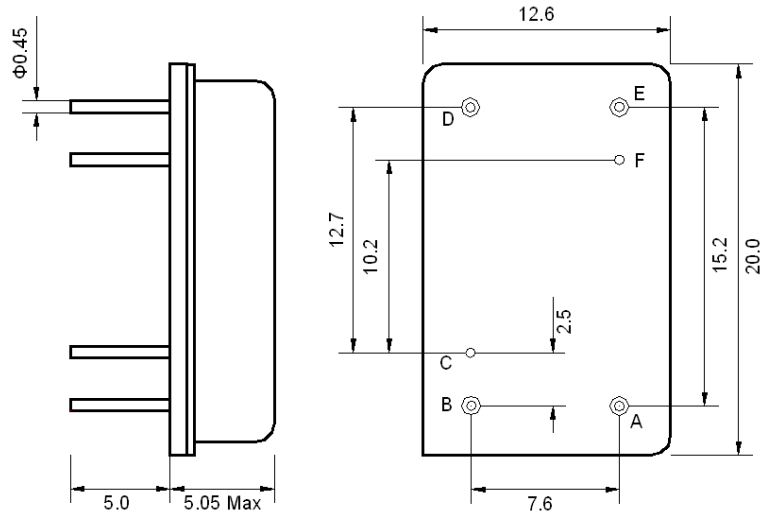
Parameters Description	Unit	Minimum	Typical	Maximum
Operating Temperature Range	°C	-	25	-
Storage Temperature Range	°C	-40	-	85
Maximum DC Voltage	V	-	-	10
Maximum Input Power	dBm	-	-	10
Source Impedance (single ended) <sup>(1)</sup>	Ω	-	50	-
Load Impedance (single ended) <sup>(1)</sup>	Ω	-	50	-
Package type & size	D			
Length x Width	mm <sup>2</sup>	-	20.0x12.6	-
Height	mm	-	-	5.05

### Electrical Specification

Parameters Description	Unit	Minimum	Typical	Maximum
Center Frequency (Fo)	MHz	-	62.5	-
Insertion Loss at Fo	dB	-	22.3	24.5
Amplitude Ripple Variation within Fo ±9.22 MHz	dB <sub>p-p</sub>	-	0.35	1.0
Group Delay Variation within Fo ±9.22 MHz	nsec	-	40	70
Absolute Delay at Fo	μsec	-	1.84	-
Temperature Coefficient	ppm/°C	-	-72	-
Bandwidth at -1.0 dB	MHz	-	19.5	-
Bandwidth at -3.0 dB	MHz	19.9	20.0	-
Bandwidth at -40.0 dB	MHz	-	21.93	22.1
<b>Attenuation Rejection</b>				
Lower Sidelobe	dB	50	55	
Upper Sidelobe	dB	50	55	

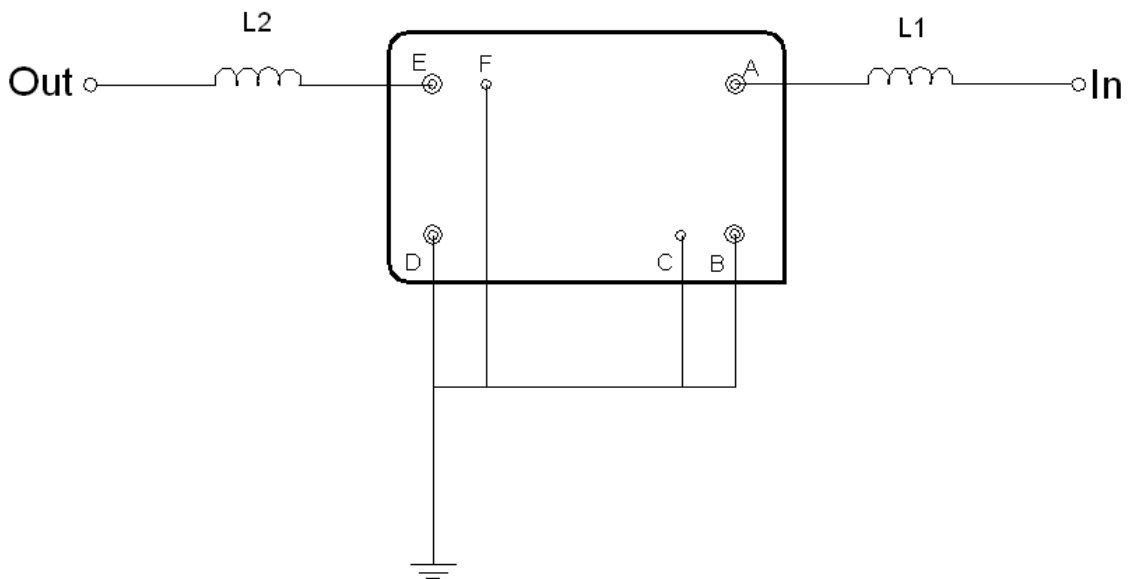
**Notes :** (1) With Matching Network (Ref. Testing Environment Circuit as shown below).  
Those impedances could be modified with different impedance values and/or structures, if necessary.

**Package Dimensions**



Pin Description	
B, C, D, F	Ground
A	Input
E	Output

**Testing Environment**



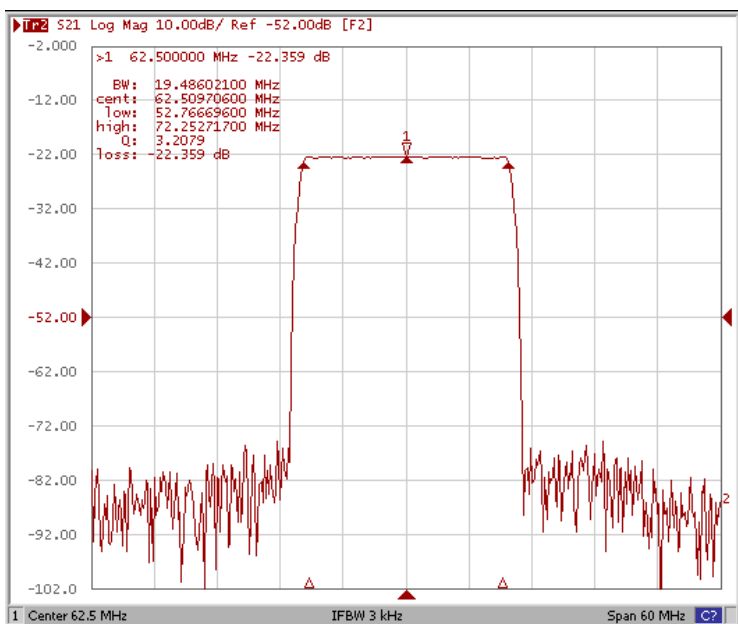
Test Fixture & Values	
Input	L1 = 270 nH
Output	L2 = 220 nH
Source/Load Impedance	50 Ω



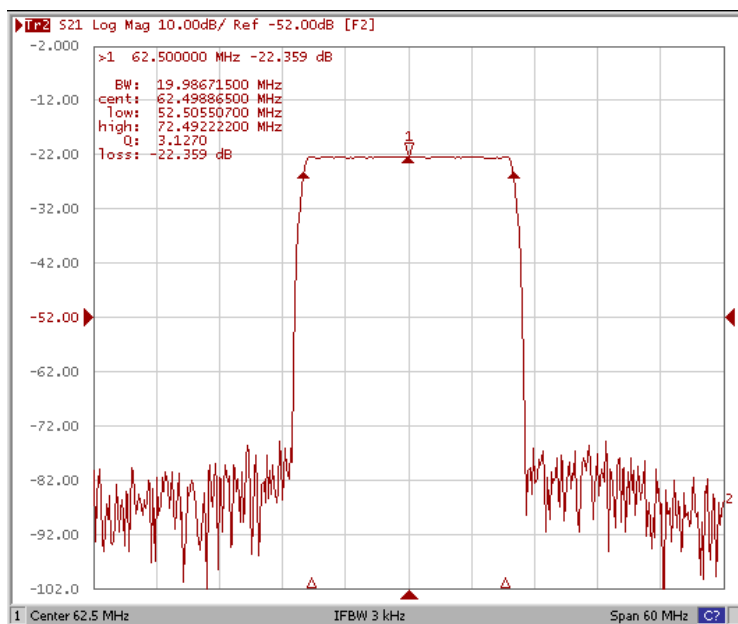
### Frequency Characteristics

#### Frequency Response

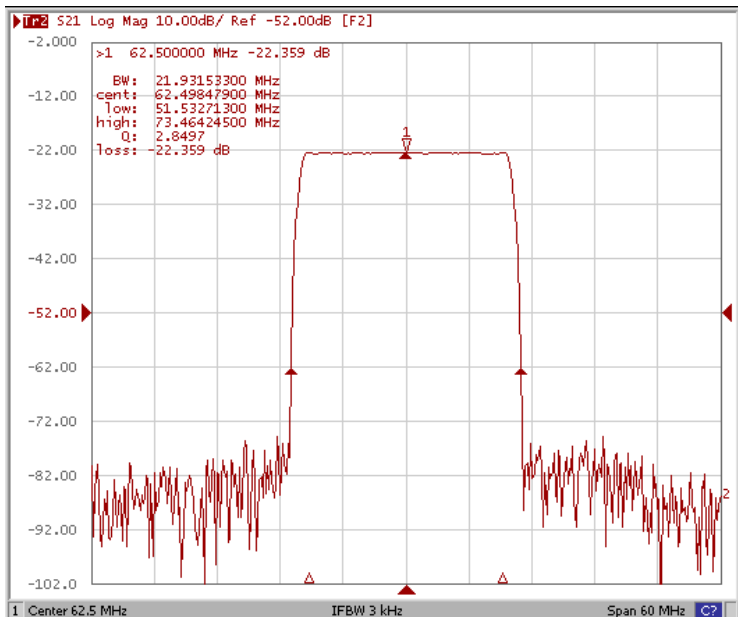
Bandwidth at -1.0 dB



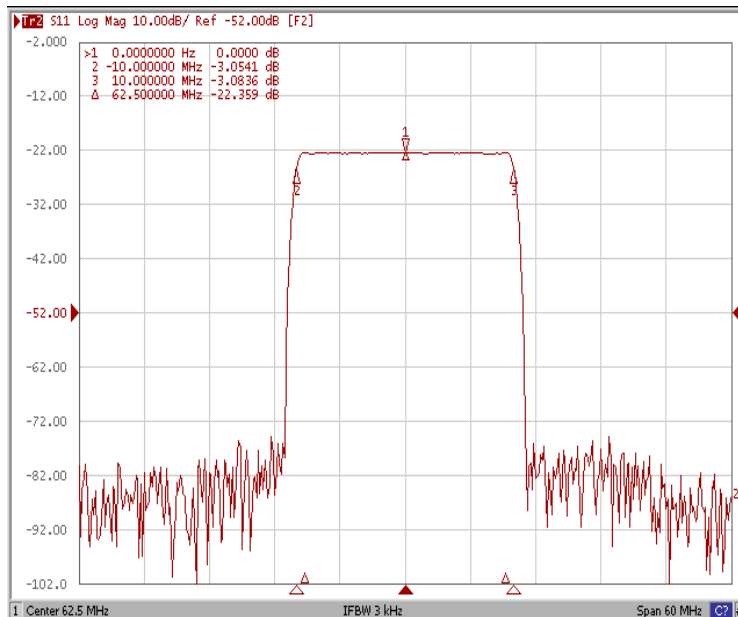
Bandwidth at -3.0 dB



Bandwidth at -40.0 dB



Attenuation Fo ±10.0 MHz

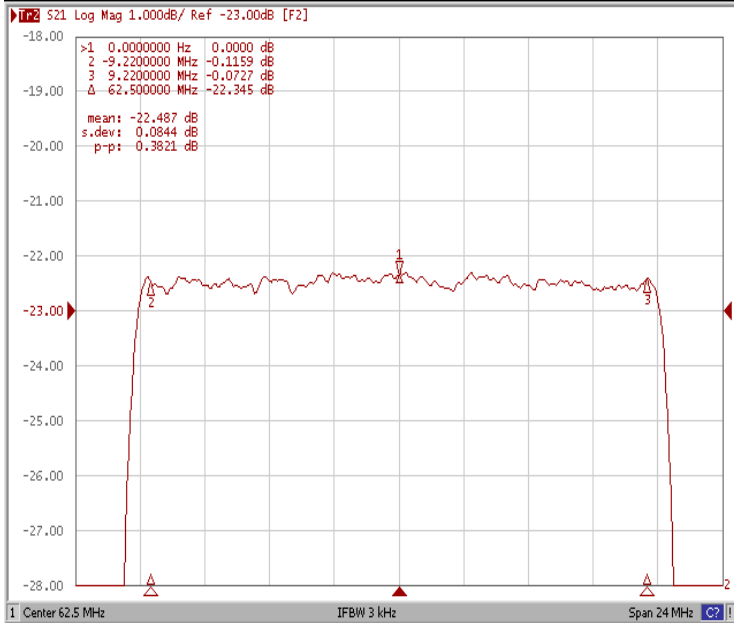




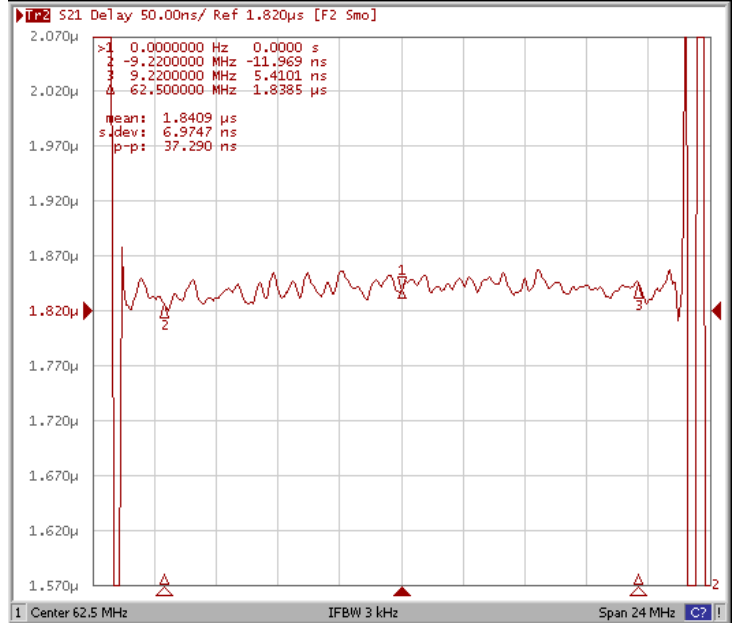
# Frequency Characteristics

## Frequency Response

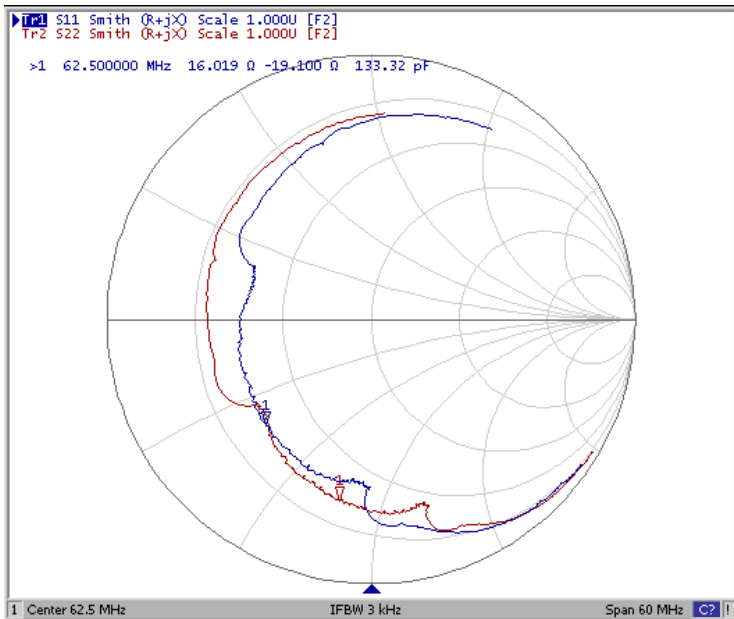
Ripple Variation Fo±9.22MHz



Group Delay Variation Fo±9.22MHz



Smith Chart



SWR

